

# GUIDANCE FOR HANGING DECORATIONS

---



---

[www.hatchmarqueehire.com](http://www.hatchmarqueehire.com)

*Hatch*  
marquee hire

# HANGING DECORATIONS



Hanging decorations in the lofty roof space of the marquee is one of the best ways to decorate, adding colour and atmosphere which when combined with fairy or festoon lighting will transform the marquee from day to night. To assist you with your planning, we have some guidance notes on hanging decorations within our marquees.



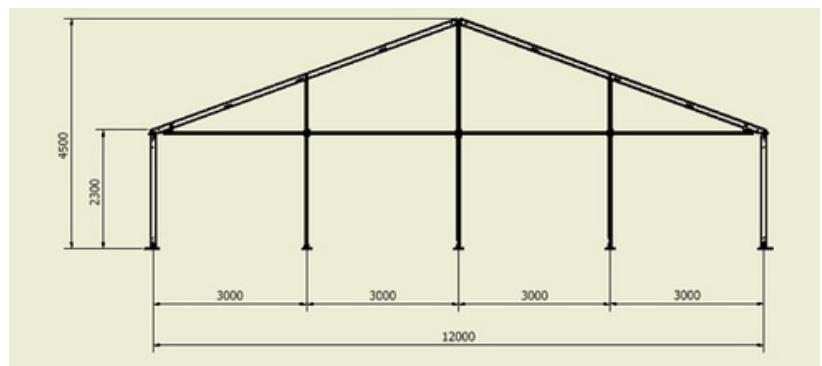
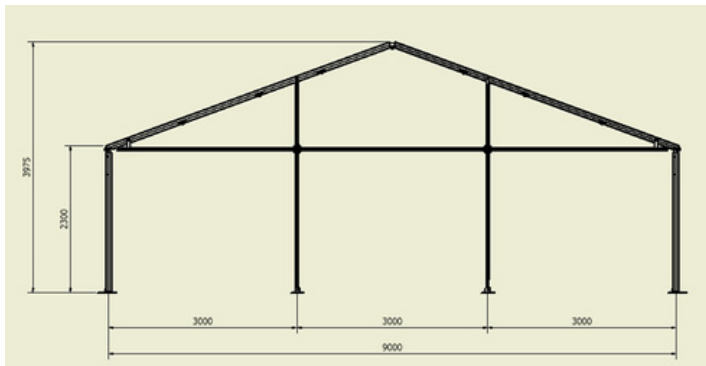


# BUNTING

---



Bunting can be hung from the ridge of the marquee to the top of the side walls and it is up to you as to how many lines of bunting you wish to put up. It can also be hung along the top of the walls throughout the marquee. This means that you will need to do a bit of calculating as to how much bunting you will need based on the size of your marquee. Remember to ensure an allowance to enable the bunting to hang rather than being taut.



- For a 9m width marquee allow 5.5m from the top of the wall to the ridge (this measurement has an allowance for the bunting to hang).
- For a 12m width marquee allow 7m from the top of the wall to the ridge (this measurement has an allowance for the bunting to hang).

When fixing bunting please tie the bunting onto the metal framework of the marquee and do not pin or sew the strings to the linings as this damages them. Allow some extra length to allow for fixing.



# PAPER LANTERNS & FLOWER BALLS

---



**Paper Lanterns** can be hung from ribbon or wiring of various lengths creating a fantastic decorative feature. There are a few options as to how to attach these to the marquee:

- Lanterns can be hung from the metal framework which can be accessed every 3m along the length of the marquee.
- We can supply you with clips enabling you to hang your paper lanterns from the marquee linings. Please do not pin any items to the linings themselves as this will damage them.
- Lanterns can be hung on long lengths of ribbon or fishing wire (which can't be seen) and then hung from the ridge to the top of the wall.



**Flower balls** look fantastic hung from the ridge of the marquee – see the diagram on the next page to get a feel for the hanging points.

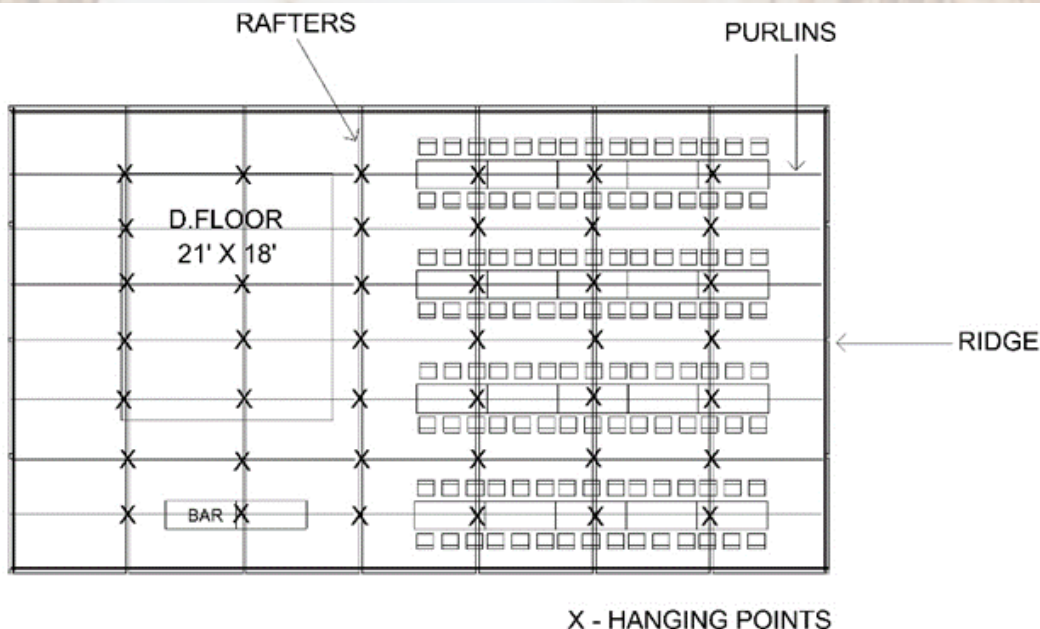


# HANGING LARGER STRUCTURES

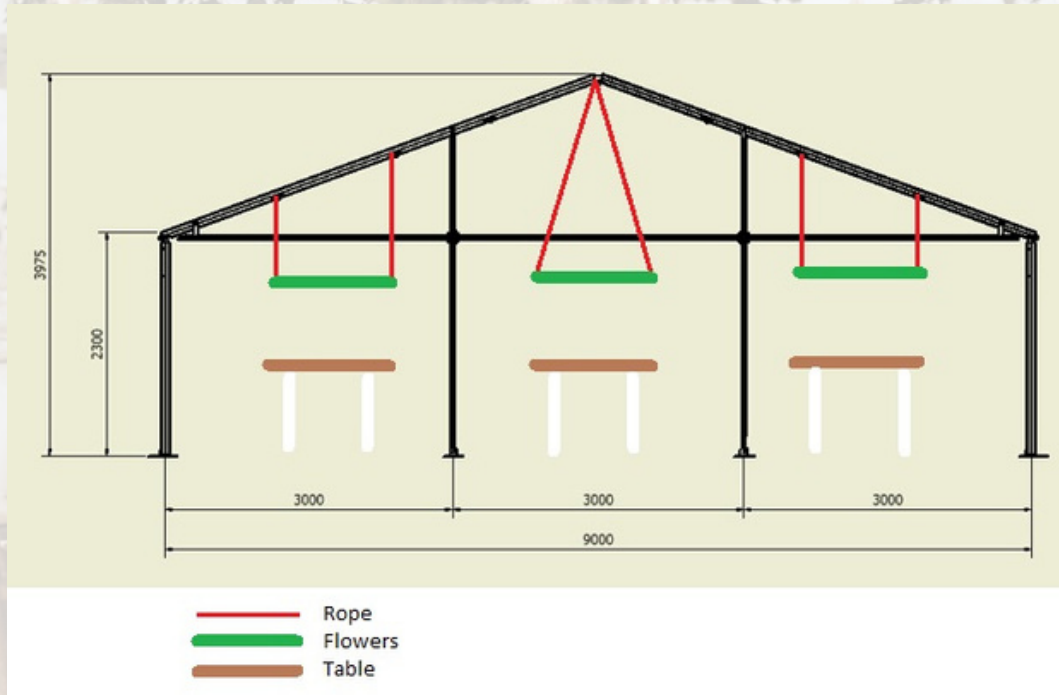
With regards to hanging foliage structures and lighting it really does look amazing! We don't supply rigs as everyone wants something different, however, we can assist with hanging structures if they are available on the day that we build the marquee (alternatively you can do this yourselves). We can of course, supply sockets and make sure they are put in the right place for any lighting.

Clients have been really creative with these structures using ladders, wooden poles or making up square wooden frames which are hung from the purlins. However, we do need to make sure that you don't come across any problems when suspending structures - so please follow the guidelines below:

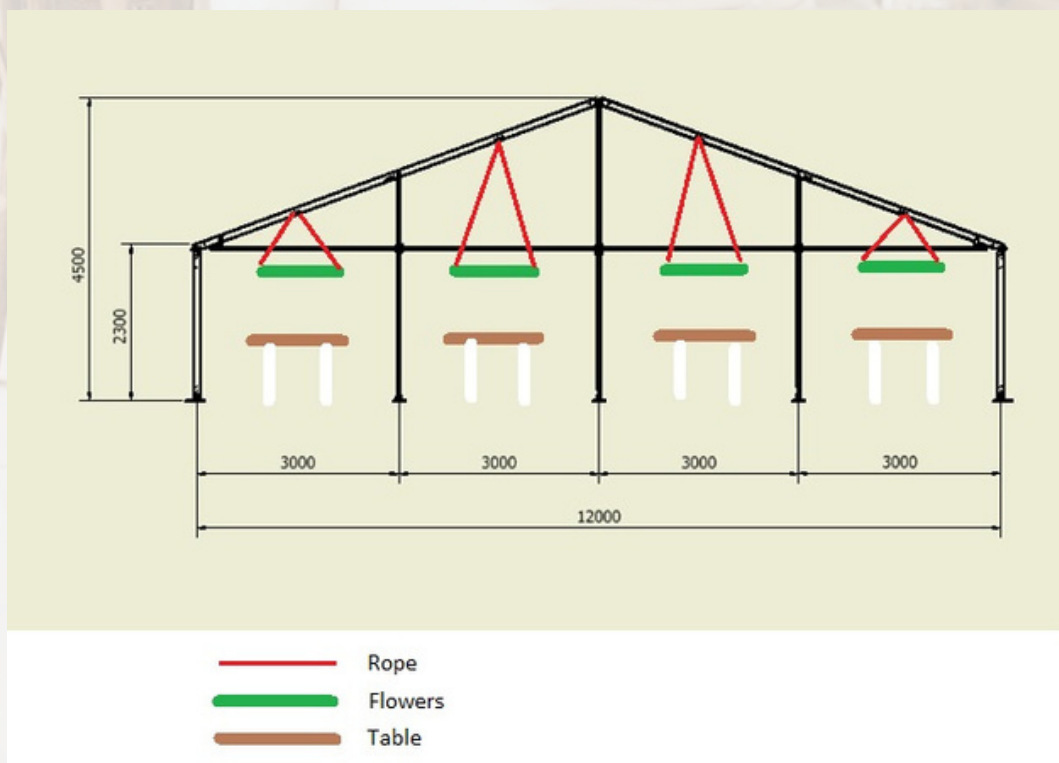
- **If your marquee is lined:** structures can be suspended from the metal work of the marquee on the ridge and purlins which can be accessed every 3m (length ways). Any structure must not exceed 10kg per 3m purlin.
- **If your marquee is unlined:** structures can be suspended from the metal work of the marquee along the ridge and purlins. Any structure must not exceed 10kg per 3m purlin.
- We can supply either 16amp Cee Form sockets or standard 13amp sockets for power if you are adding your own lighting to the structure.
- Once you have homed in on what you would like to do, just let us know and we can make sure it is going to work when it comes to hanging it!



# HOW TO HANG ABOVE TRESTLE TABLES



9M MARQUEE



12M MARQUEE



Please feel free to send our details to your florist / other suppliers & we will be happy to go through our guide for hanging decorations.

We are happy to assist with hanging bunting and paper lanterns **on the day that we erect the marquee**. Please let us know prior to installation so that we can allow some time for this in our schedule and have a bit of a plan as to what you would like to do!

For ideas and inspiration take a look at our Social Media pages:

<https://www.pinterest.co.uk/hatchmarquees/>

[https://www.instagram.com/hatch\\_marquee\\_hire/](https://www.instagram.com/hatch_marquee_hire/)

If you have any queries and want to check your ideas before you get going, please let us know, otherwise enjoy getting creative!

# Contact us

01548 550322

[info@hatchmarqueehire.com](mailto:info@hatchmarqueehire.com)

[www.hatchmarqueehire.com](http://www.hatchmarqueehire.com)

*Hatch*  
marquee hire

